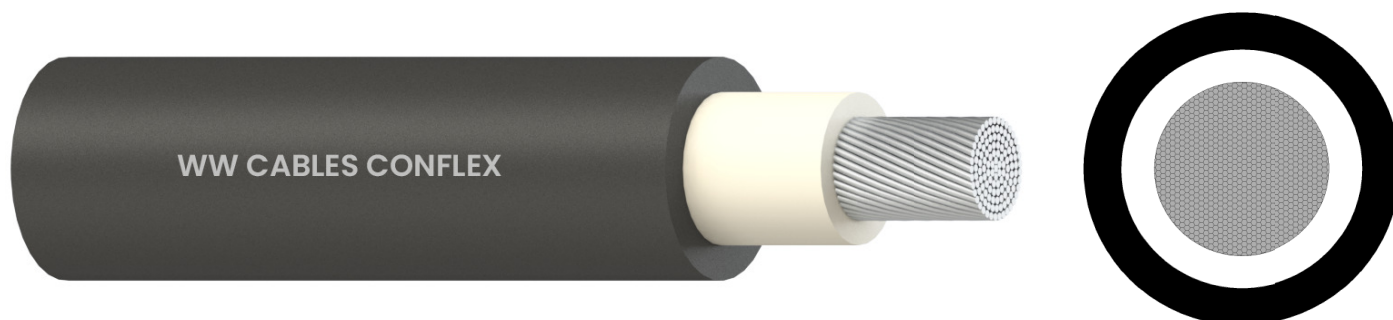




1C X-HF-110 Insulated SDI Cables 0.6/1kV, Flexible AL, LSZH, 110°C



Note: The above drawing is for representation purpose only.

Description

Conductor:

Flexible Aluminium

Insulation:

Low Smoke Zero Halogen X-HF-110

Sheath:

Low Smoke Zero Halogen HFS-110-TP

Core Identification

White

Sheath Colour

Black

Technical Data

Voltage Rating:

0.6/1kV

Operating Temperature:

-40°C to +110°C

Short Circuit Temperature:

250°C for 5 sec

Standards Compliance

AS/NZS 5000.1

AS/NZS 3808

AS/NZS 1125

AS/NZS 1660.5.6 (Equivalent to IEC 60332-1)

AS/NZS 1660.5.1 (Equivalent to IEC60332-3-24)

Characteristics



FLAME RETARDANT



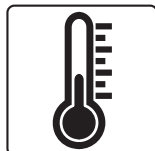
UV STABILISED



LOW SMOKE



HALOGEN FREE



-40°C ~ +110°C



FLEXIBLE

The information in this specification is to be used as a guide only. World Wire Cables (Aust) Pty Ltd has taken all due care in compiling the information in this specification but accepts no responsibility for any errors or omissions. All information provided in this specification is covered by copyright.





1C X-HF-110 Insulated SDI Cables 0.6/1kV, Flexible AL, LSZH, 110°C

Physical & Electrical Characteristics

WWC Product Code	Conductor Size (mm ²)	Conductor Diameter (mm)	Insulation Thickness (mm)	Approx. Overall Diameter (mm)	Min. Bending Radius (mm)		Approx. Weight (kg/km)
					During Installation	After Installation	
*SMAL35X2H29-BK	35	8.6	0.9	13.1	144	86	229
AL50X2H2	50	10.4	1.0	15.3	168	101	289
AL70X2H2	70	11.7	1.1	16.9	186	112	386
AL95X2H2	95	13.5	1.1	18.8	207	124	477
AL120X2H2	120	15.4	1.2	21.0	231	139	590
AL150X2H2	150	16.4	1.4	22.5	248	149	725
AL185X2H2	185	18.3	1.6	25.0	275	165	883
AL240X2H2	240	20.8	1.7	27.9	307	184	1094
AL300X2H2	300	23.2	1.8	30.7	338	203	1330
AL400X2H2	400	29.2	2.0	37.5	413	248	1737
*SMAL500X2H29-BK	500	32.2	2.2	41.2	453	272	2236
*SMAL630X2H29-BK	630	36.4	2.4	46.1	507	304	2906

*These cables are non-stocked items subject to lead times.

Conductor Size (mm ²)	*Current-carrying capacity (A)				Reactance at 50Hz (Trefoil) (Ω/km)	Three-phase voltage drop at 50Hz (mV/A.m)
	In Air Touching Flat	In Air Enclosed	In Ground	In Ground Enclosed		
35	133	120	184	147	0.0930	2.07
50	169	152	218	175	0.0901	1.52
70	212	190	268	215	0.0869	1.057
95	255	229	322	258	0.0849	0.770
120	302	272	367	293	0.0828	0.616
150	348	313	411	328	0.0830	0.508
185	400	360	466	373	0.0821	0.415
240	481	433	540	432	0.0808	0.328
300	553	498	610	488	0.0800	0.278
400	666	600	696	557	0.0788	0.234
500	774	697	789	631	0.0780	0.202
630	904	814	889	711	0.0777	0.180

*Based on trefoil formation, ambient air temperature of 40°C, soil temperature of 25°C, burial depth of 0.5m and soil thermal resistivity of 1.2K.m/W.

The information in this specification is to be used as a guide only. World Wire Cables (Aust) Pty Ltd has taken all due care in compiling the information in this specification but accepts no responsibility for any errors or omissions. All information provided in this specification is covered by copyright.

